

# Lazy Eye Study

-

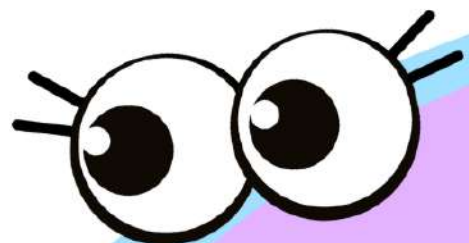
**Train your Vision using  
Virtual Reality**

-

**Looking for adult participants!**

# WHAT IS THE STUDY ABOUT?

- Investigating **lazy eye**, also named **Amblyopia**, which affects visual processing.
- Discovering how the brain responds to **visual training** and **improvements** in individuals with **lazy eye**
- Understanding how the brain sees using **MRI** scans.



# Who can participate?

Healthy participants with **Lazy Eye** aged **18-50** years and **MRI safe**.

You must have a reliable internet connection at home and live in or around Oxfordshire.

Participation is **free** and you will be **compensated** for your time!

# How to participate?

**Contact** us at:

[vision.study@endcn.ox.ac.uk](mailto:vision.study@endcn.ox.ac.uk)

Visit the **website**:

<https://amblyopiaproject.wordpress.com/>

Or scan this **QR code**:



# Neural mechanisms of visual plasticity in amblyopia

Ethics Reference: R80950/RE001



**wellcome  
centre  
integrative  
neuroimaging**



NUFFIELD DEPARTMENT OF  
CLINICAL NEUROSCIENCES